

MOVING TECHNOLOGIES



MAXIPARTNER[®] - MX

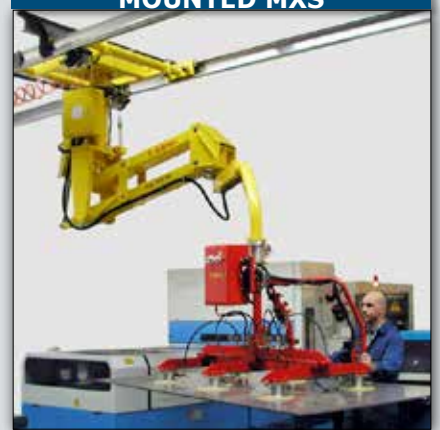
COLUMN MXC



FIXED OVERHEAD MXF



OVERHEAD TROLLEY MOUNTED MXS



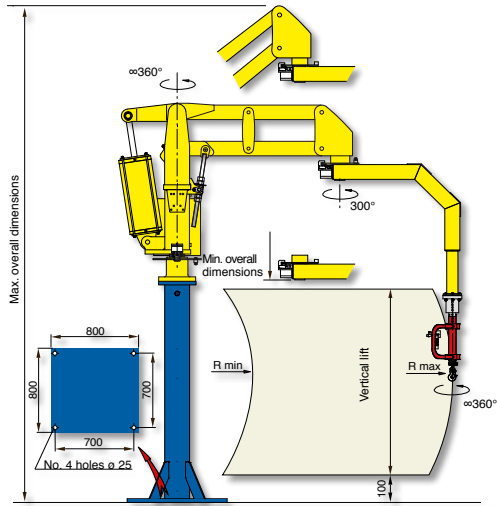
 **dalmec**
Industrial Manipulators

Pneumatic Manipulator MAXIPARTNER MX with articulated arms

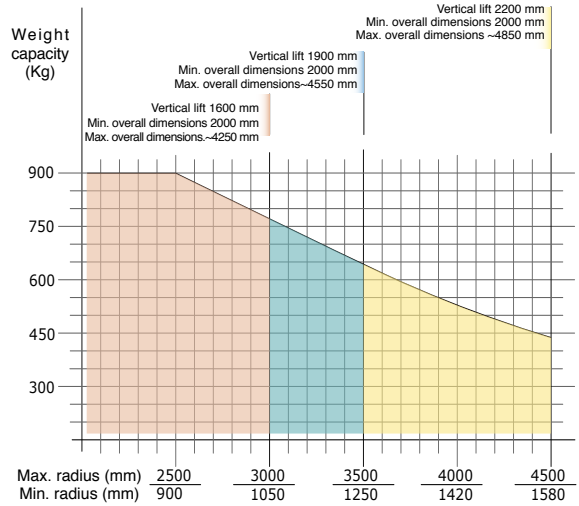
MAXIPARTNER MX, designed and realized particularly for difficult handlings, meets the requirement to move heavy and off-set loads, in any direction, allowing the operator to work with the minimum effort in good ergonomic and safety conditions. Its slim and strong structure eliminates the "drifting" effect.

MAXIPARTNER® - MX

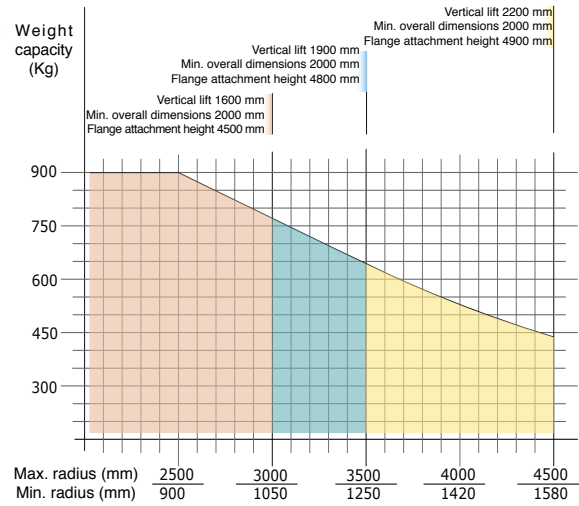
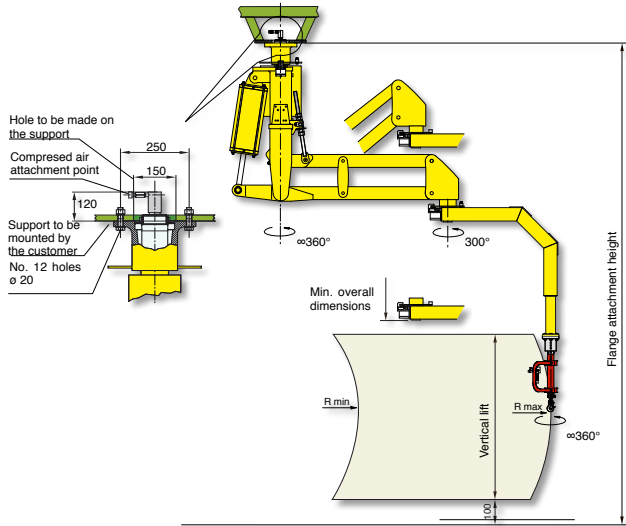
Maxipartner column mounted - MXC



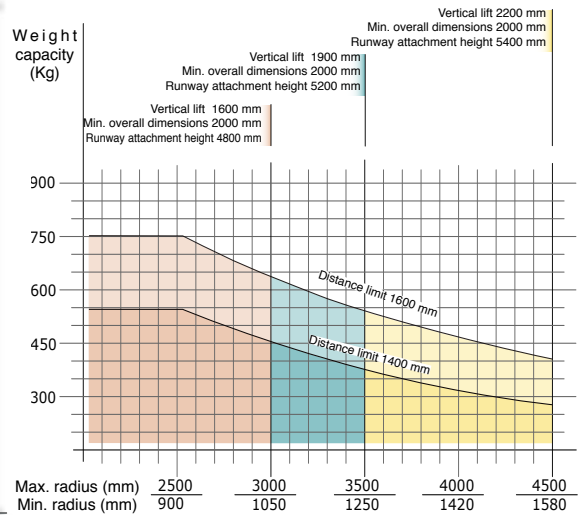
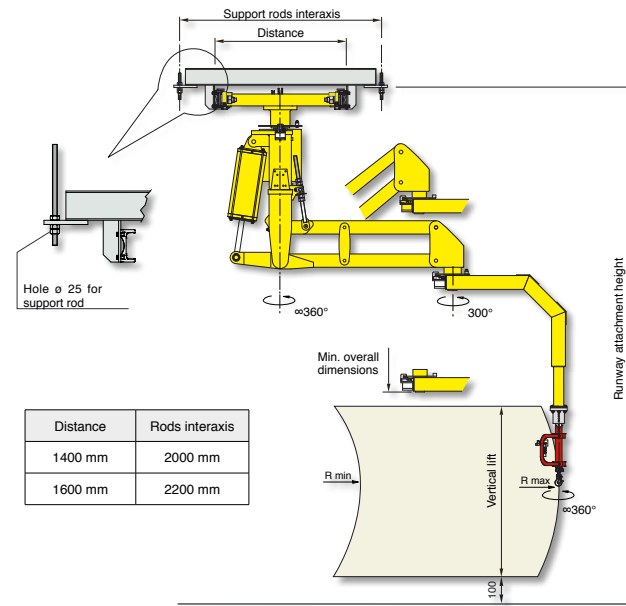
Structural versions: column mounted on fixed base-plate, autostable base-plate of our supply properly dimensioned or with autostable motorised trolley that translates on a simple profile track on the floor.



Maxipartner overhead mounted - MXF



Maxipartner overhead trolley mounted - MXS



Air supply: Dry and oil-free compressed air min constant 0.7÷0.8 MPa